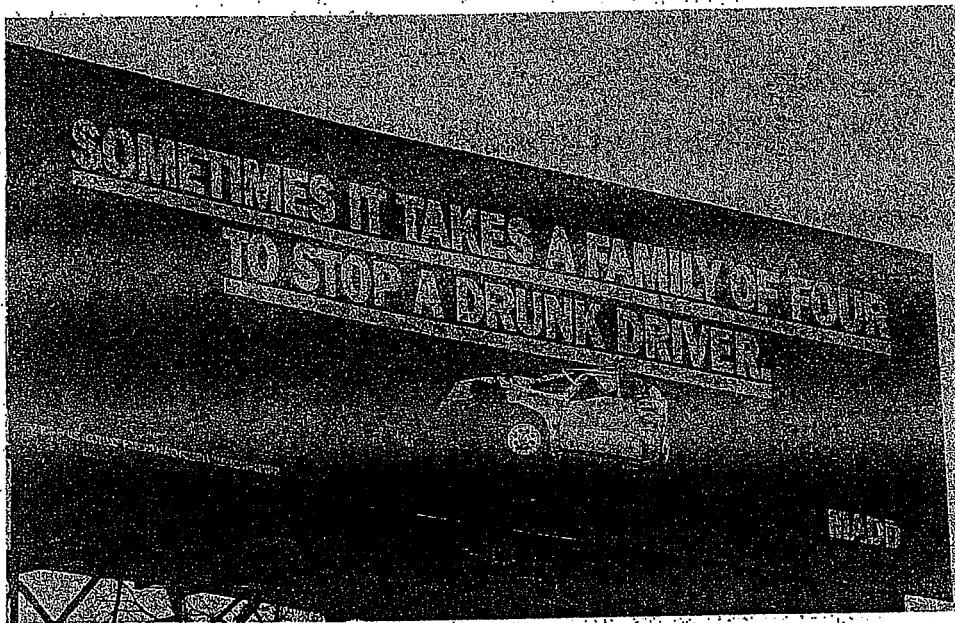


## Multiple-Choice Questions

1. The political agenda is affected by all of the following EXCEPT
  - (A) a crisis, such as the terrorist attacks of September 11, 2001
  - (B) pressures by interest groups, such as organized labor, to address certain issues, such as working conditions
  - (C) pressures by institutions, such as the Supreme Court, to change practices, such as segregation
  - (D) pressures by unfriendly foreign nations to change U.S. foreign policy
  - (E) the use of the media to publicize matters, such as automobile safety



2. The billboard shown above is an example of
  - (A) how an issue became a part of the political agenda as a result of policy entrepreneurs
  - (B) a public relations campaign, financed by the federal government, to raise public awareness
  - (C) a protest by a public interest group against an unfavorable court decision
  - (D) the use of PAC money to influence an election campaign
  - (E) how a public interest group attempts to influence the voting records of members of Congress

3. Almost everyone has to pay Social Security taxes, but almost everyone will receive Social Security benefits when they retire. This is an example of
- (A) interest group politics, in which a single group benefits most from the policy-making process
  - (B) majoritarian politics, in which the policy-making process benefits large numbers of people who also bear the costs
  - (C) client politics, in which small identifiable groups will receive most of the benefits from the policy-making process
  - (D) entrepreneurial politics, in which a large number of people benefit from a policy that imposes costs on a small group
  - (E) pork-barrel politics, in which pet projects benefit the constituents of a member of Congress
4. Which of the following policies were adopted because a policy entrepreneur dramatized the issue, galvanized public opinion, and mobilized congressional support?
- I. automobile safety legislation
  - II. legislation regulating the meatpacking industry
  - III. legislation cutting highway funding for states that did not raise the drinking age
  - IV. the creation of the Department of Homeland Defense
- (A) I and II
  - (B) I, II, and III
  - (C) II and III
  - (D) II, III, and IV
  - (E) I, II, and IV
5. In the 1980s several industries were deregulated. Why did these industries object to deregulation?
- (A) because detailed regulations enabled them to run their businesses using standard operating procedures
  - (B) because once those industries were deregulated, they were no longer able to keep prices low for consumers
  - (C) because regulations kept those industries competitive in the market
  - (D) because deregulation would lead to competition, lower prices, and lower industry profits
  - (E) because deregulation would prevent industries from hiring the skilled labor forces they needed to stay competitive
6. Which of the following historical events changed the political agenda and widened the scope of government?
- I. the civil rights movement
  - II. the Great Depression
  - III. the environmental movement
  - IV. World War I
- (A) I and II
  - (B) I, II, and III
  - (C) II and III
  - (D) II and IV
  - (E) I, III, and IV

7. Sometimes policies not demanded by the public nevertheless become items on the political agenda. What explains this?

- (A) Key people in government, the political elites, become interested in certain problems and try to solve them.
- (B) Policy-makers rather than the public set the agenda, so the public has little impact on the political agenda.
- (C) The public does not pay much attention to the policy agenda.
- (D) Members of Congress are more interested in helping their districts than in making policy for the nation.
- (E) The policy-making process is so complicated that it is difficult to determine what the public wants.

8. Why has the Senate become a major source of political change?

- (A) Senators frequently run for president, so they seek out issues that will garner attention.
- (B) Senators have more time to deliberate than members of the House of Representatives, so they are more able to introduce policies.
- (C) Senators "fly under the radar" more than the president; as a result, they have become policy innovators.
- (D) The Senate has stricter party discipline than the House; as a result, more policies can be enacted.
- (E) Senators are held more accountable to their constituents than representatives are.

9. Every policy-making decision involves balancing what competing interests?

- (A) the balance between who will write the laws and who will implement them
- (B) the balance between the legislative branch and the executive branch
- (C) the balance between judicial activism and judicial restraint
- (D) the balance between who will benefit and who will bear the costs
- (E) the balance between the powers of the state and federal government

10. What kinds of projects typically are the subject of "logrolling" (exchanging votes on bills)?

- (A) bills that will create new nationwide social programs
- (B) bills involving controversial issues, such as abortion
- (C) bills for funding the military and defense
- (D) bills funding "pork-barrel" projects
- (E) bills regulating the environment

## Free-Response Questions

1. Sometimes policies are adopted that provide benefits to most of society and impose substantial costs on a small group. For EACH of the following, identify a policy that has been adopted, and describe who benefits and who bears the costs.
  - environmental policy
  - consumer protection policy
  
2. Interest groups compete for favorable policies. Even after policies are passed, interest groups continue to compete as they are enforced. For EACH of the following, identify the major interest groups involved in policy-making and explain how they compete in the process of policy implementation.
  - National Labor Relations Board (NLRB)
  - Occupational Health and Safety Administration (OSHA)